

**NAM JUNE PAIK MUSEUM**

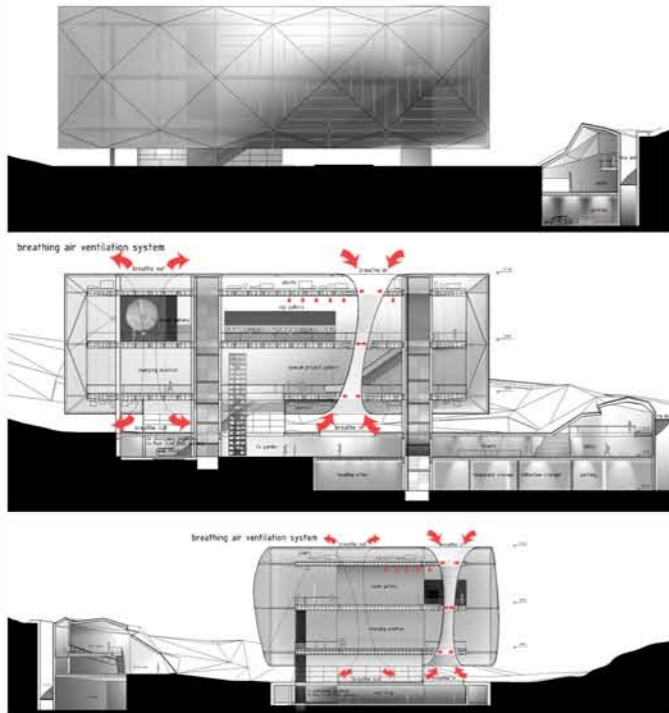
Nam June Paik is one of the first artists to recognize the potential of the electronic medium and its influence on culture and on the economy.

The project attempts to incarnate the poetry of this pioneer of video art.

The era of electronics and informatics assumes that "projection, mutation and simulation" are the three key of a type of architecture which moves its message more and more to the exterior superficial impact; architecture, becoming more and more a screen, should be a neutral support for images which speak out for themselves loudly.

As it is an artificial lung – a perfect machine that carries out circulation of air inside the building, it is a light-weight, changing mechanism with fibreglass, lined on the inside of the skin so as to distribute the load uniformly on all the mobile walls.

reference:  
[http://architettura.supereva.com/architettura/20040102/index\\_en.htm](http://architettura.supereva.com/architettura/20040102/index_en.htm)



**"Car Experience"**

**AUTOMOBILE MUSEUM at NANJING**

"Car Experience" is a project for a building to be dedicated to the automobile:

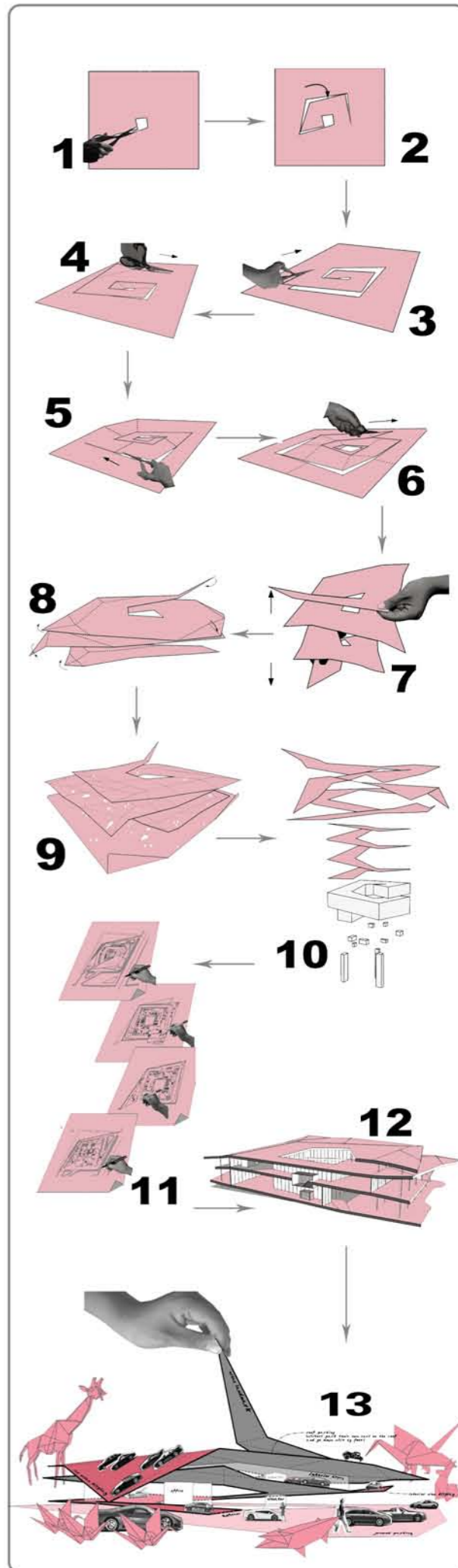
Here one will not find stairs, walls and elevators, but ramps which wind sinuously upwards creating a fluid conception of space, and where the flux of cars can move freely and reach the different levels of the edifice.

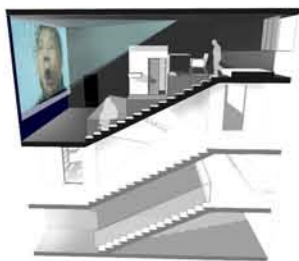
On an overall scale the area tectonically resembles a road, with a structure similar to that of an elevated motorway, but on a more human scale, the structure is as complex, ergonomic and sophisticated as the interior of a car.

The principal structure of the building is a spiral ramp with a glass partition dividing the exterior from the interior, and with this people can easily reach the view of the green atrium in the middle.

The visitor enters the museum with his own car and initiates the exhibition's journey as on a safari, uneven surface facilitating the exhibition of cars from different angles and enabling the visitor to observe them from either above or below. This alternating movement with its practical yet amusing function creates a corresponding visual effect on the outer façade of the building, which appears as a fanned sheet of paper, folded and refolded, and where each fold is an opportunity to exhibit at a suitable angle the cars which are attached to the inclining floor.

reference:  
<http://www.njmuseum.com/zh/news/content/200904/2009041622809.html>





TYPE 1



TYPE 2



TYPE 3

**FUNNEL HOUSE**  
500M<sup>3</sup> unit

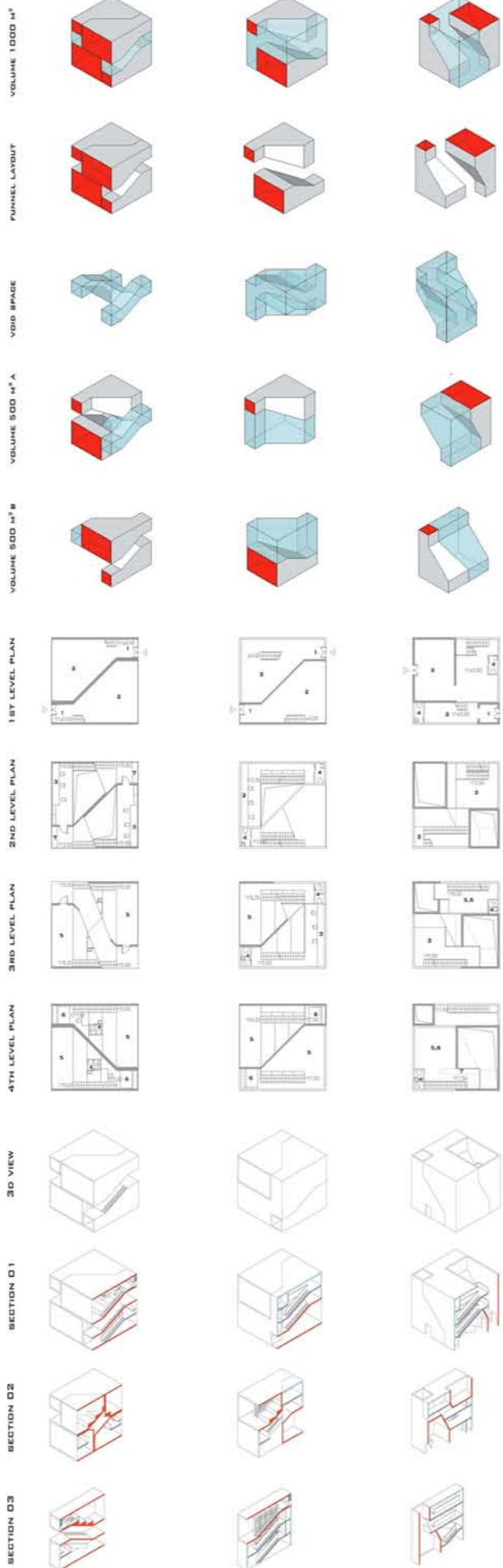
The Funnel House is a 1000/2 M3 double artists house composed of two units of 500M3 put together so that the volume requirement is respected in all parts.

The volume will be composed by prefabricated funnel shape pieces that combined in 3 different configuration types, gives in total 6 type of living typologies. This funnel concrete piece is linked to the memory and the metaphor of factories volumes and can be adapted in different positions so to create small cinema or theatre, or more abstract spaces like towers for meditation and for exhibitions.

reference:  
[http://design.sunbala.cn/sjs/caseContent.asp?anli\\_id=634](http://design.sunbala.cn/sjs/caseContent.asp?anli_id=634)



TYPE 1      TYPE 2      TYPE 3



1ST FLOOR PLAN

2ND FLOOR PLAN



SECTION

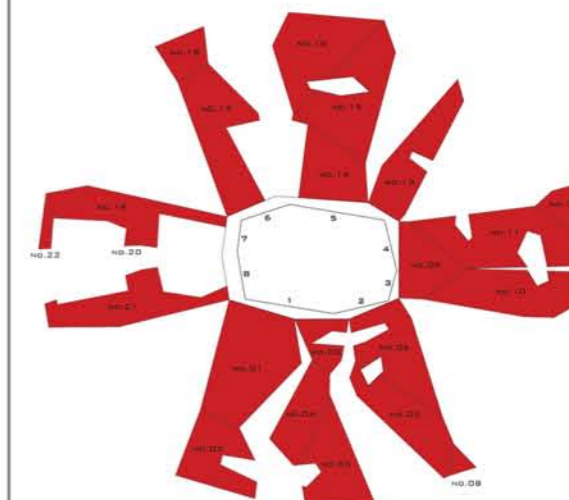
RED OBJECT

To convert an ex factory in the centre of Shanghai, our team was given certain criteria to follow and final requirements to be met: there should be premises to be used as offices, versatile spaces, meeting rooms, a reception and a café.

Taking into account the height of the rooms, it was decided to divide the upper space into two mezzanine floors. In this way a neutral central void was created. The use of white resin for the floors and epoxy applied directly onto the concrete makes the double height a perfect setting for the utility functions, all housed among objects resembling sculptures.

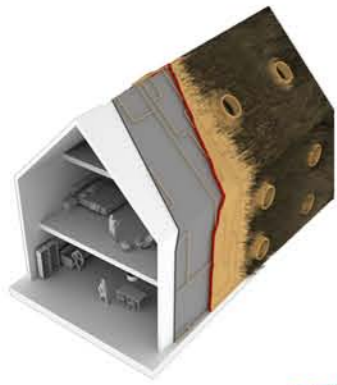
A faceted red object contains two meeting rooms and a kitchen in its lower level. Other less startling sculptures, are the reception desk which lies in the bend of the banister of the stairs and another long belt-like surface which leads the way into the central area.

reference:  
<http://article.idchina.net/200776040143.htm>



SURFACE



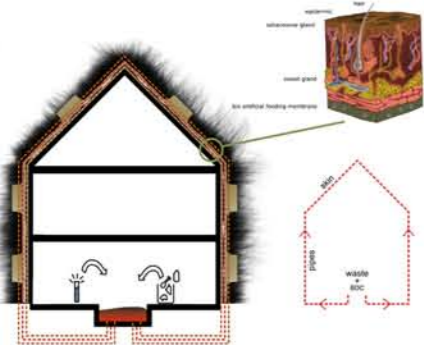


**GENETIC ARCHITECTURE**

Genetic architecture is based on the philosophical notion of genesis.

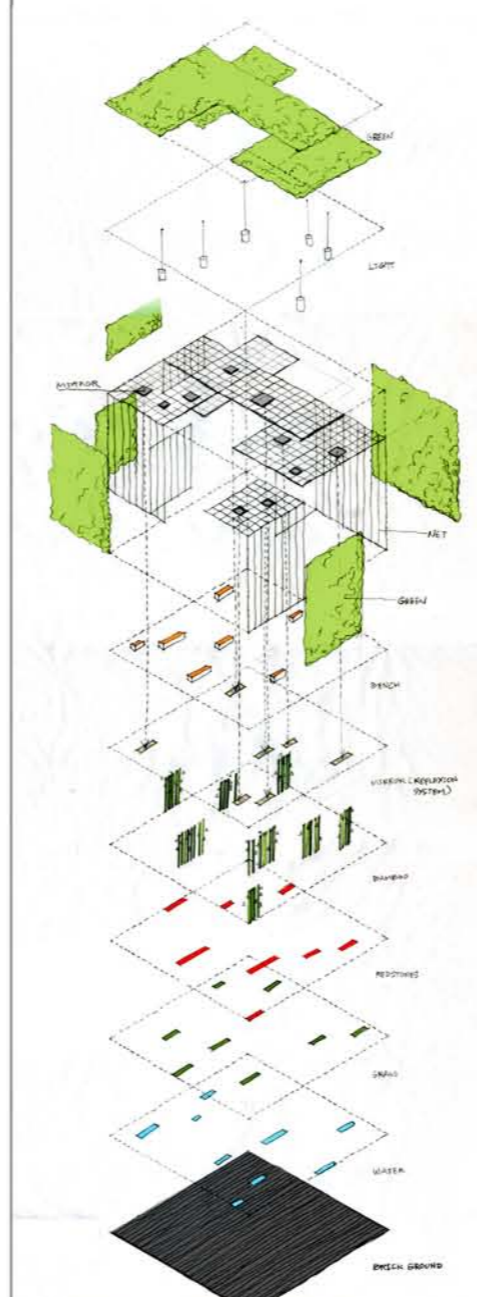
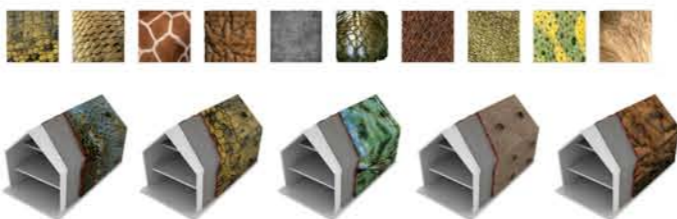
The design ideates from an existing technological research to generate skin systems as cladding material for a building. The skin transforms the building into an intelligent structure with automated adaptive systems to suit variable situations. It also features properties such as change of color, elasticity, latitude responsive skin, variance in hardness etc.

The waste from the building system is recycled to provide nutrition for the external skin. It includes biodegradable components of the waste, both solid as well as liquid transformed through mechanical processes, mixed with nutritional/chemical liquid and eventually circulated through pipe system to aid in the nutrition process of the skin.



ANIMAL SKIN TYPOLOGIES AND PROPERTIES

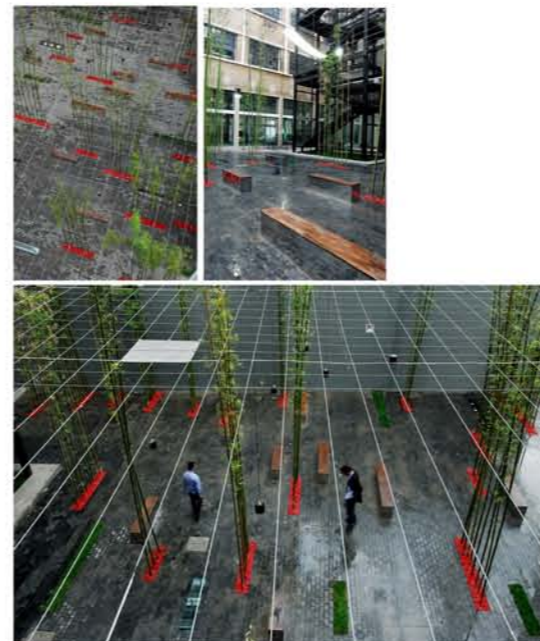
typology	location	elasticity	hard coated	sweat	thickness	maintenance
elephant	[Map]	[Icon]	40°	[Icon]	[Icon]	[Icon]
[unlabeled]	[Map]	[Icon]	20°	[Icon]	[Icon]	[Icon]
[unlabeled]	[Map]	[Icon]	40°	[Icon]	[Icon]	[Icon]
[unlabeled]	[Map]	[Icon]	40°	[Icon]	[Icon]	[Icon]
[unlabeled]	[Map]	[Icon]	0°	[Icon]	[Icon]	[Icon]
[unlabeled]	[Map]	[Icon]	20°	[Icon]	[Icon]	[Icon]
[unlabeled]	[Map]	[Icon]	40°	[Icon]	[Icon]	[Icon]
[unlabeled]	[Map]	[Icon]	-40°	[Icon]	[Icon]	[Icon]
[unlabeled]	[Map]	[Icon]	20°	[Icon]	[Icon]	[Icon]
[unlabeled]	[Map]	[Icon]	-40°	[Icon]	[Icon]	[Icon]



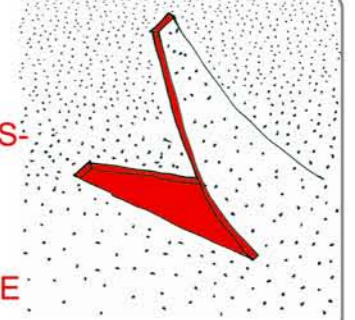
**IN FACTORY**

In Factory is a redevelopment project for an abandoned industrial area in the centre of Shanghai. The project is based on a very stringent budget and concentrates mainly on a re-arrangement of the exterior following two simple interconnecting concepts:

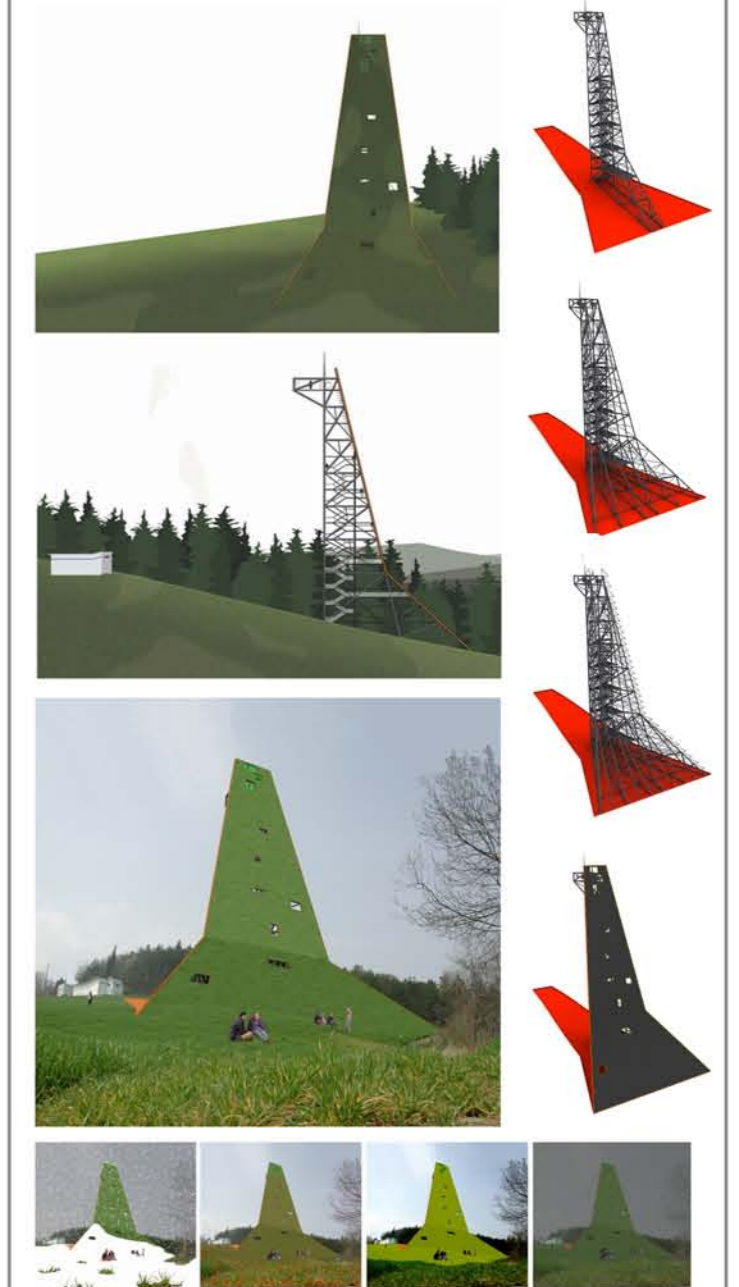
- 1) A virtual ceiling composed of a three-dimensional mesh created with fine wire rods.
- 2) A ground area impacting visually with patterns of longitudinal strips of different lengths and materials.



**TELECOMMUNICATIONS-OBSERVATION TOWER at SOGLIANO al RUBICONE**



The façade of this tower would be located in front of a green hill and would look towards the town would be slanting and be built so that it could support a herbageous bed attached to a lattice-work steel grid, inside which the stairs would wind. In this way the green surface overlooking Sogliano would limit the possible negative impact on the environment and at the same time, seen from the exterior would seem rather light and permeable, not like a tower but rather like a strip of ground that has risen up to harmoniously house the requested functions.



← CLIENTS →

**SHUI ON DEVELOPMENT LIMITED.**

Headquartered in Shanghai, Shui On Land (HKSE: 272) is the flagship property development company of the Shui On Group in the Chinese Mainland with a proven track record in developing large-scale, mixed-use city-core development projects and integrated residential development projects. The Company was listed on the Hong Kong Stock Exchange on 4 October 2006, the largest Chinese real estate enterprise listed that year.

Shui On plaza, 333 Huai Hai Zhong Road, Shanghai, China

**SHANGAN INVESTMENT MANAGEMENT LTD**

Shangan investment management Ltd is founded in 1997 shanghai, specializing in real estate development and marketing. The company has participated in numerous major land and property development across mainland china. Floor 5, buikding C, 1147 Kang Ding rd, Shanghai, China

**L'OREAL CHINA**

20th/21st/22nd floors  
2, Hua Shan Road  
China Enterprises Building  
Shanghai, China

**SHANGHAI BAOSHAN PEOPLE'S GOVERNMENT**

No 5, Mishan Rd, Baoshan District, Shanghai, China

**NANJING NEW&HIGH-TECH INDUSTRY DEVELOPMENT GOVERNMENT**

Box 3209, Nanjing China  
210061, P.R.C

**TONGJI UNIVERSITY**

Tongji University is one of the leading universities directly under the State Ministry of Education in China. It offers degree programs both at undergraduate and postgraduate levels.

1239 Siping Road, Shanghai, P.R. China

← DESIGN PROCESSES →

**DESIGN PREPARATION: SITE SURVEY AND PUBLIC HEARING**

- Conduct site and surrounding area survey
- Conduct public survey on various topics according to the specific project type and nature if needed
- Evaluate the site condition in the aid of land, quantity and geological surveys if necessary
- Finalize the site report for further design purpose

**CONCEPT DESIGN : PRELIMINARY CONCEPT**

- Prepare concepts for architecture spaces, elevations, visual principles.
- Prepare presentation of design for client review.
- Attend design meetings with clients and consultants.
- Prepare illustrative sections.
- Prepare image boards.

Anticipated Duration:

2 Weeks or 10 Working Days

Anticipated Deliverables:

- Concept layout plan
- Schematic design analysis diagrams
- Sections and/or Elevations
- Image boards illustrating general architecture character
- Design introduction
- Client presentation

**CONCEPT DESIGN: REFINEMENT OF CONCEPT**

With input from the client of the preferred design direction, the project will be further refined. Concept plans will be developed in greater depth to include a greater sense of materiality such as buildings materials, lighting and air conditioning.

Anticipated Duration:

Three Weeks or 15 Working Days

Anticipated Deliverables:

- Illustrative project, layout
- Sections and/or Elevations
- Image boards indicating material intentions
- Landscape character
- Hand drawn character sketches or CAD files
- Client presentation

**DESIGN DEVELOPMENT**

Review the project design development with client and consultant to determine work to be developed and or documented by others.

- Architectural elements.
- Layout design principles.
- Review landscape lighting location layout with other consultants.
- Prepare preliminary construction details package for coordination.

Anticipated Duration:

two Weeks or 10 Working Days

Anticipated Deliverables:

- Master layout each floor elevation section
- Submission at the following stages  
100% Complete

**CONSTRUCTION DOCUMENTATION**

Construction design quotation mentioned above includes architectural, structural (includes steel structure section), plumbing, fire protection, electricity, telecommunication, HVAC and Lighting.

- Architectural elements.
- Confirm schedules.
- Prepare plan and section drawing set.
- Finalize construction detail package.

Anticipated Duration:

2 Weeks or 10 Working Days

Anticipated Deliverables:

- layout, Elevation .Section
- Construction details
- 100% "Bid Set" submittal package

**SITE VISITS**

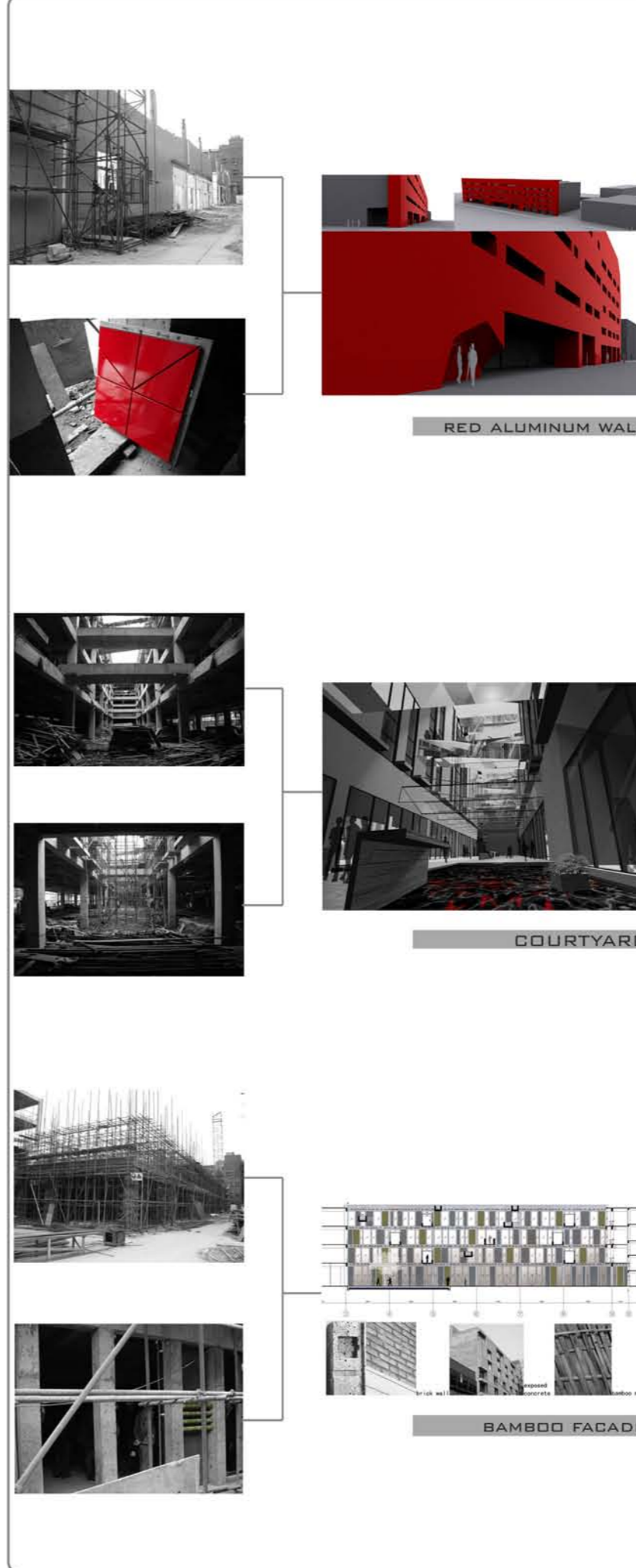
Anticipated Duration:

Varies according to construction program

Anticipated Deliverables:

We would be available to attend a number of site visits / inspections to address any design or additional issues that may arise during the implementation process of the proposed design scheme. Site Visits shall be attended by a Project Manager or Senior Designer.

← SHOPPING & OFFICE BUILDING →

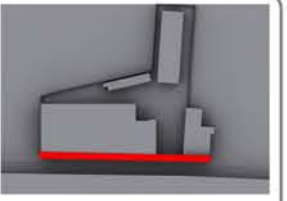


RED ALUMINUM WALL

COURTYARD

BAMBOO FACADE

**3DS WALL**  
Mixed-use office and retail building in new Gonghe road, Shanghai.



The design for this mall was challenged from the beginning by many constraints as the relatively low budget, the extreme usage of the square meters, the strict urban regulations, and most of all the existing concrete structure of an old factory and the existing design for the new building structure.

The design process answered to those constraints with a very simple and functional plan:

- concentrating the attention on the main façade.
- leaving in the internal facades an industrial feeling.
- leaving a very narrow internal courtyard to maximize the building square meters usage and to maximize the internal prospective view effect.
- creating two lively corridor plaza in the ground shopping floor.



← SHOPPING & OFFICE BUILDING →

← CLIENTS →

← DESIGN PROCESSES →

**PROJECTS**

- Urban Design and Architecture:
- Automobile Museum, exhibition and retail building, high tech zone, Nanjing.
  - 3DS wall, mixed use office and retail building, 1148 new gonghe road, Shanghai.
  - KIC village entrance, plaza landscape, university road, kic village, Shanghai.
  - Baoshan district, Energy Conservation Development Centre Planning Project, old factories redevelopment plan, Shanghai.
  - HongKou "In Factory" creative district, Shanghai.
  - ShengPu shopping mall, SuZhou.
  - Tree House in Monte d'Oro, Rome.
  - In Factory JingAn Six Loft Buildings at KangDing Rd, Shanghai.
  - HongKou complex facade at ZhouJiaZui Rd - GongPing Rd, Shanghai.
  - Plaza de Shenyang Redstar furniture & decoration, two shopping malls and five residential towers, Xitiexi district, Shenyang.
  - Plaza de Zhengzhou Redstar furniture & decoration, two shopping malls and five residential towers, ZhengDong New District.
  - The FaKtory new facade, 210 Taikang Rd Shanghai.
  - New library for the Rome Vatican University with Jeremy King, Riccardo Roselli and Andrea Ricci.
  - Lighting for the fifth Chapel of the "Sacro Monte" at Varese on behalf of SOLE (Italian National Energy Company).
  - Covering of the Spheristerion at Macerata.
  - Police barracks at Fiumicino with Engineer A. Di Lecce.

Interior Design:

- "Hightex" textile group concept shop, Hangzhou.
- "THE CUT - interactive disco experience" disco club, KIC plaza, Shanghai.
- "ZeBar" bar, KIC plaza, Shanghai.
- "7 camice" store, Aotelaisi outlet, Shanghai.
- "INCANTO" showroom, furniture fair 2007, booth construction at International Expo Centre Shanghai.
- "TUUN" DanYin Wellness Juice Bar, Shanghai.
- "The District" International Service China Co., Ltd. office at KangDing rd in Factory, Shanghai.
- Cloudland Water Manor Phase 3 model villa at ChunXin Rd, Shanghai.
- Meng Qing Yuan Beer Factory at ChangHua Rd, interiors consultancy, Shanghai.
- Mailman PostKard advertising company offices, Shanghai.
- Bush private villa at Wukang Rd., Shanghai.
- Fragalà private apartment, at via Aventino, Rome.
- Private apartment within historical building at central Rome.
- "Internazionale" magazine offices at via Regina Margherita, Rome.
- Zilli private apartment at San Giovanni, Rome.
- Italian Chapel at Prague, with Francesco DeLogu and Franchetti Pardo.
- Ricci private apartment at Torrino Nord, Rome.

Industrial Design:

- CLUSTERize ©, furniture system.
- TUUN Kiosk, juice bar kiosk.
- FleshFlash ©, leather table.
- Inspire ©, suitcase.
- "Breathing Architecture" prototype for exhibit.
- SPIRA ©, polypropylene lampshade to market with "Slamp".



**PUBLICATIONS**

- "sole24ore" newspaper (15 december 2008) Italy "Gatti porta in Cina il museo-origami"
- "a+" 44 young international architects, review n.010 (october 2008) Spain "3GATTI"
- "STRIKE A POSE - eccentric architecture and spectacular spaces" Gestalten book (2008) Germany "Red Object"
- "the outlook magazine" magazine n.83 (march 2009) China "fashion & architecture - crossover talk"
- "1000x LANDSCAPE ARCHITECTURE" Braun book (2008) Germany "In Factory"
- "abitare" torino geodesign, magazine n.483 (june 2008) Italy "tourist merchandising"
- "domus plus" (domus china) magazine n.19 (march 2008) China "utopia hotel"
- "I'ARCA" magazine n.233 (february 2008) Italy "3GATTI.COM"
- "atd" magazine cover n.160 (january 2008) china "In Factory, Shanghai"
- "interior design" magazine n.75 (october 2007) USA "centerfold"
- "art4d" magazine n.142 (october 2007) thailand "code red"
- "oris" magazine n.48 (september 2007) croatia "tree house"
- "Beaux Arts" magazine n.279 (september 2007) France "Auprès de mon arbre"
- "FRAME" magazine n.37 (july/august 2007) Netherlands "Scarlet Sculpture"
- "cubo" magazine cover n.003 (july 2007) portugal "Uma casa na árvore"
- "pol oxygen" magazine n.22 (july 2007) australia "a window into the architecture of tomorrow"
- "mark" magazine n.8 (june/july 2007) Netherlands "constructivism revisited"
- "1000 X EUROPEAN ARCHITECTURE " Verlagshaus Braun book (2007) Germany "Telecommunication Observation Tower"
- "domus china" magazine n.17 (december 2007) China "Italian Designers in China"
- "KIID" book (december 2007) Korea "funnel house"
- "arhitectura" magazine n.54 (may 2007) Romania "In Factory - Red Object"
- "beijing today" newspaper n.309 (4-10 may 2007) China "500m³ Design. A room for imagination"
- "M.style" magazine (november 2008) China "Non Conventional Office"
- "Persist of vision. Shanghai architects in dialogue" MCCM creations - Design Republic book (2007) China "Francesco Gatti interview"
- "New Architectural language" book (2007) China "3GATTI"
- "25ans" magazine (february 2007) China "Forget Rules"
- "modern decoration " magazine n.109 (october 2006) China "Design according to our life philosophy "
- "space" magazine n.69 (march 2006) China "ShenYang Shopping Mall"
- "Brands and Designers Awards 2005 Florilegium " book (2006) china "Shenyang shopping mall"
- "News Business Daily " newspaper (15 august 2006) china "Italian design set foot in design industry in Shanghai"
- "vivishanghai.com" online magazine (2006) china "Visti da Vicino - Paesaggi Urbani"
- "A trip to Italy " Galla Placida book (2006) china "3GATTI"
- "space" magazine n.68 (january 2006) China "Nam June Paik museum"
- "space" magazine n.64 (october 2005) China "green bed - telecommunication tower "
- "I'ARCA" magazine n.203 (may 2005) Italy "Telecomunicazioni a misura di paesaggio"
- "METROPOLIS" magazine (september 2005) China "Orientation - Francesco Gatti"
- "NHV" magazine (august 2005) China "Francesco Gatti's view of architecture"
- "El Mercurio" newspaper (2005) Chile "Telecommunication Tower"
- "Net.it" book, G. Pino Scaglione (2004) Italy "arch'it - Telecommunication Tower"
- "arch'it" online magazine (2004) Italy "Telecommunications-Observation Tower at Sogliano al Rubicone"
- "INTIMACY" book (2004) Italy "breathing design".
- "arch'it" online magazine (2004) Italy "Nam June Paik Museum - Korea"
- "area" magazine (nov-dec 2003) Italy "INTIMACY deep inside exhibit"
- "architecture.it" online magazine (2002) Italy "media-center"
- "Glasgow Daily Times" newspaper (25 september 1997) Great Britain "The new Buchanan street underground station"
- "laboratorio e progetto 95-96" dedalo edition (1996) Italy "Rome new gate"

**COMPITATIONS and AWARDS**

- "Nanjing Automobile Museum" international architecture competition, first price, entered in the construction phase, Nanjing - China.
- "500M³ design " GBD art district phase 1 architecture competition, phase1 silver price, entered in phase two (for construction), Beijing - China.
- "Geodesign Project " competition, selected with the artist Wei Weng to lead the international workshop for the 2008 Turin World Design Capital, Turin, Italy.
- "06 Modern Decoration interior design media price" annual architecture & design award, Shenzen-China.
- "europan 8 " rechtDoor, Dordrecht-Stadshellingen-Netherlands.
- "Buchanan Street Underground Station" Classified first, Glasgow-Scotland.
- "Tra la murgia e il mare" Classified first, Andria-Italy.
- "Telecommunication Tower" Designs displayed, Sogliano al Rubicone-Italy.
- "Nam June Paik Museum" Design selected, Kionggi-Korea.
- "Monument for 1997 - Hong Kong " Design published, Hong Kong.
- "Stuttgarter Pavillon" designs displayed in Weisenhof Gallery in Stuttgart and at Enzimi in Rome, Stuttgart-Germany.
- "New IUAV site for refrigeration warehouses at S.Basilio" in collaboration with Arch. M. Maturi, Venice-Italy.